



CONNEXUS GLOBAL



RENEWABLE ENERGY

Globally connected, Locally networked.

Recruiting world-class leaders and professionals
that drive Renewable Energy organizations
across the EMEA, Americas & Asia Pacific regions.

[CONNEXUS-GLOBAL.COM](https://www.connexus-global.com)

CONNEXUS GLOBAL COMPANY SUMMARY

At Connexus Global, we exist to strengthen our clients' organisations. We provide bespoke recruitment services for multinational companies in a wide array of sectors along the global value chain, helping them to future-proof their businesses by placing top talent in crucial roles.

In the coming years, we plan to expand our ever-growing global presence, all while maintaining our locally-networked approach – and with an even greater focus on diversity, equity, and inclusion. With our strategically located offices, expert staff, and unrivalled candidate networks, we are ideally poised to take care of all your recruitment needs, allowing you to focus all your efforts on growing your business.

Our Renewable Energy division supports organizations in recruiting experienced sector specific professionals.

Our industry expertise includes:



SOLAR



WIND OFFSHORE
/ ONSHORE



ENERGY STORAGE



CLEAN
TECHNOLOGY



CARBON MARKETS



COMMODITIES



WATER & UTILITIES



ENERGY FINANCE



ENERGY INVESTMENTS



SUSTAINABILITY



HYDROPOWER

By building engaging working relationships with the highest quality talent in these areas, we have been able to form successful partnerships with world leading companies.

We are uniquely positioned to provide market insights that give our partners a competitive edge.



WE RECRUIT THE HIGHEST QUALITY MID TO SENIOR LEVEL TALENT FOR OUR PARTNERS ACROSS CRITICAL FUNCTIONS:



- EXECUTIVE OFFICERS
- INVESTMENT & FINANCE MANAGEMENT
- ASSET MANAGEMENT & SERVICES
- FINANCE / STRUCTURED FINANCE
- LEGAL, COMPLIANCE & RISK
- BUSINESS DEVELOPMENT / M&A / SALES
- TECHNOLOGY & INNOVATION
- EXECUTIVE PROJECT LEADS
- EXECUTIVE ENGINEERING LEADS
- EXECUTIVE CORPORATE FUNCTIONS

SERVICES OFFERED



- | | | |
|------------------------------|--|---|
| 01 RETAINED SEARCH | 02 PROFESSIONAL SEARCH | 03 INTERIM LEADERSHIP APPOINTMENTS |
| 04 TALENT PIPELINING | 05 MARKET & COMPETITOR INTELLIGENCE | 06 SALARY BENCHMARKING |
| 07 DIVERSITY ANALYSIS | 08 ADVISORY SERVICES | |

WHAT OUR CLIENTS SAY



“Connexus Global have helped us hire a number of senior management positions across a range of critical functions. They really understand the Renewables space and our unique business requirements, this enables them to marry up the technical and cultural requirements of our roles really effectively.”

HR DIRECTOR

Renewables Company

“Connexus Global are an invaluable source of information for us on the candidate market. Their insights allow us to make informed real-time decisions in regards to our talent sourcing strategy.”

CHRO

Integrated Energy Multinational

“Connexus Global are our go-to recruitment partners globally when building out our executive leadership team. We highly recommend them for all things renewables.”

GLOBAL HEAD OF TALENT ACQUISITION

Leading Global Renewables Developer

“We have found Connexus Global to be a knowledgeable, dependable and effective recruitment partner. We have used them a number of times now to hire senior talent for our renewables business unit and have been happy with the results each time. We continue to consider them our first port of call when going external.”

GLOBAL INTEGRATED ENERGY BUSINESS

Europe Head of Talent Acquisition

“We used Connexus Global to build our Asset Management and Investment Group teams. They managed to produce a quality shortlist within 2 weeks for what were historically difficult positions to fill. Extremely happy with the service.”

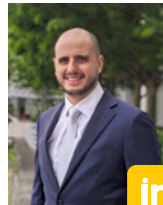
MANAGING DIRECTOR UK

European IPP

CONSULTANTS



ED GELLING
Managing Director
Global Head of Commodities
EMEA
E ed.gelling@connexus-global.com



ALEX LEE
CEO
APAC
- Renewables & Commodities
E alex.lee@connexus-global.com



ANDREW EVANS
Associate Director
EMEA
- Renewables & Commodities
E andrew.evans@connexus-global.com



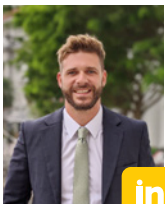
RYZAL RAUF
Associate Director
APAC
- Renewable Energy
E ryzal.rauf@connexus-global.com



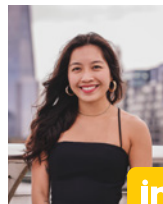
RAIYAN WARIDWAN
Senior Consultant
APAC
- Renewable Energy (Energy Storage)
E raiyan.waridwan@connexus-global.com



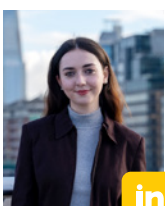
ALASTAIR LOH
Senior Consultant
APAC
- Renewable Energy (Utilities)
E alastair.loh@connexus-global.com



HENRI MOORE
Business Director
APAC
- Renewables & Commodities
E henri.moore@connexus-global.com



CALLISTA YONG
Consultant
EMEA
- Renewables & Commodities
E callista.yong@connexus-global.com



ALICE STREET
Associate Consultant
EMEA
- Renewables & Commodities
E alice.street@connexus-global.com





CONNEXUS GLOBAL



AUSTIN

600 Congress Ave.,
Austin, TX 78701,
United States

LONDON

New Kings Beam House,
22 Upper Ground,
Floor 5 - 537,
London SE1 9PD
T +44 2038 000399

SINGAPORE

#08-02 Cecil Court
138 Cecil Street
Singapore 069538
EA Licence No: 18S9186
T +65 6012 9793

BANGKOK

712/1 TBI Building, 11th Floor,
Room 1101, Sukhumvit Rd.26-28,
Klongtan, Klongtoei, Bangkok,
10110 Thailand
T +66 2 506 1900

